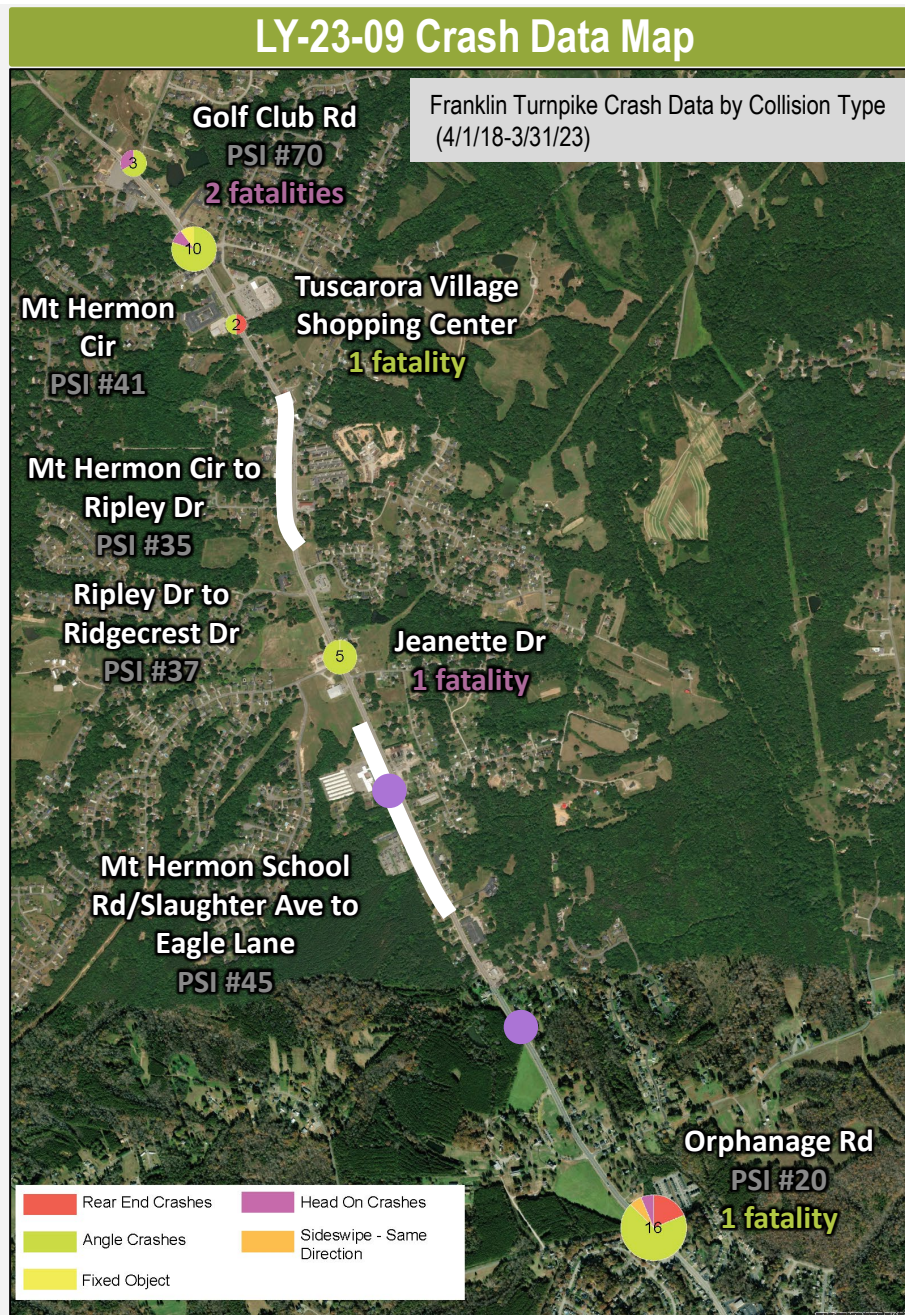


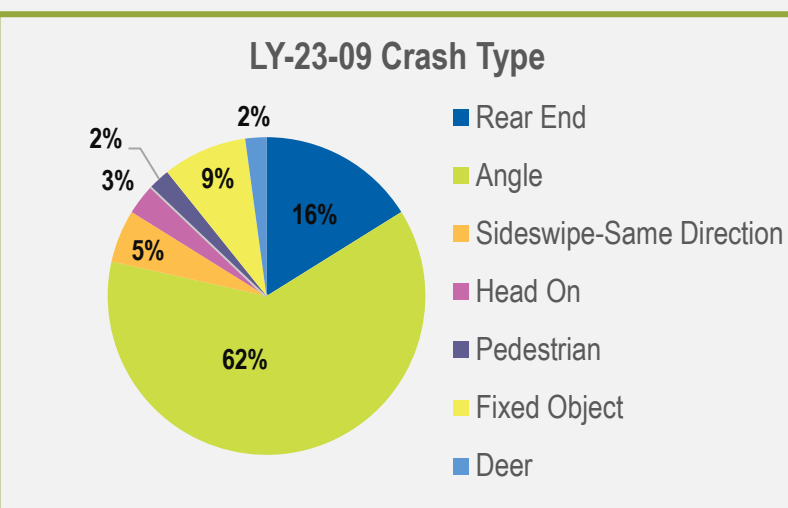
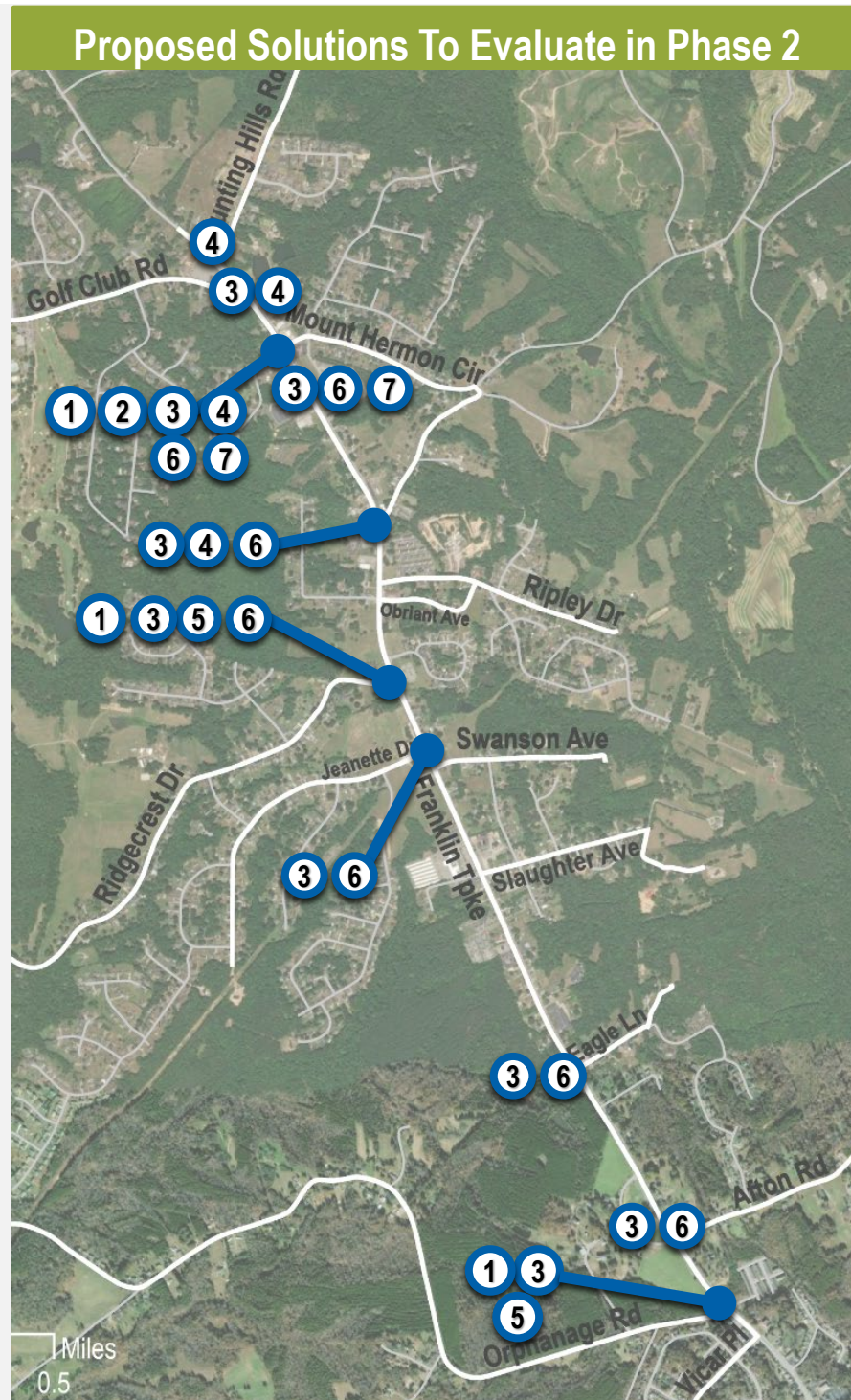
# Phase 1 – Executive Summary



VTrans Needs	
NEED	PRIORITY
Bicycle Access	Low
Pedestrian Access	Low
Construction District Safety Improvement	High
Pedestrian Safety Improvement	Low
Transportation Demand Management	Low
Transit Access	Low
Transit Access for Equity Emphasis Areas	Low

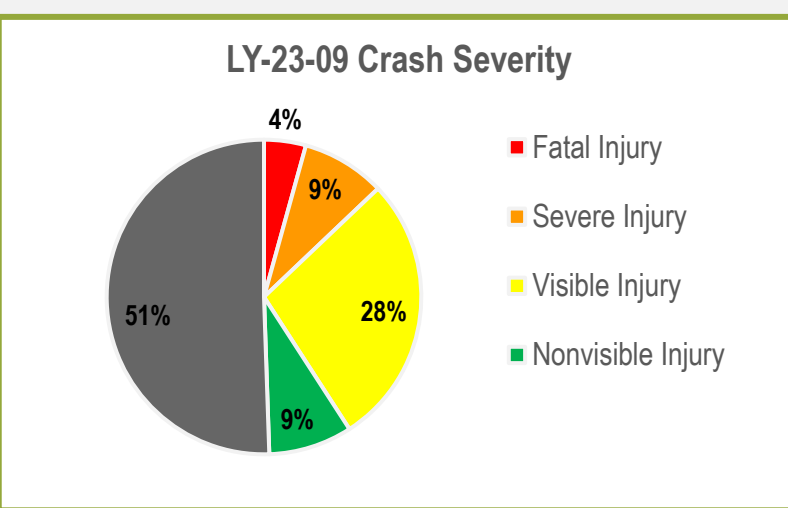


- ### Operations and Safety Needs
- 45 mph posted speed limit, observed speeds higher.
  - 3 segments on VDOT's PSI segment list.
  - 3 intersections on VDOT's PSI intersection list.
  - 62% of crashes are angle collisions
  - 49% of crashes result in injury
  - 14% of crashes were reported as involving speeding
  - Observations during the site visit include:
    - High travel speeds
    - No congestion



- ### Bike and Pedestrian Access Needs
- Pedestrian and bicycle activity were observed
  - No bicycle facilities exist within the corridor
  - Sub-standard sidewalks exist on both sides of the roadway throughout the entire corridor
  - Identified route on the WPPDC 2018 Bike Plan

- ### Safety and Operations Improvements
- 1 Roundabout
  - 2 Continuous Green-T
  - 3 RCUT
  - 4 Left-In/Left-Out
  - 5 Traffic Signal
  - 6 Full Opening
  - 7 Right-In/Right-Out



- ### Corridor Wide Operations and Safety Improvements
- Installation of a median
  - Dynamic Speed Feedback Signs
  - Access management review
  - Turn-lane analysis
  - Road diet
- ### Corridor Wide Bike and Pedestrian Improvements
- Marking crosswalks
  - Shared use path on west side

- ### Transit and TDM Needs
- Study area not currently served by transit
  - No plans to extend transit service to study area