

PHASE I - DIAGNOSIS AND PROBLEM IDENTIFICATION

STUDY OVERVIEW



Purpose, Goals, & Objectives

The purpose of this study is to identify recommendations to improve safety along the Route 114 (Peppers Ferry Road) corridor.

Identify cost-effective improvement alternatives that address the identified safety needs.

Existing Issues in the Study Area

- Lack of left-turn lanes at intersections throughout the corridor
- Vertical curves limit sight distance on approaches to intersections
- Lack of pedestrian facilities along the corridor

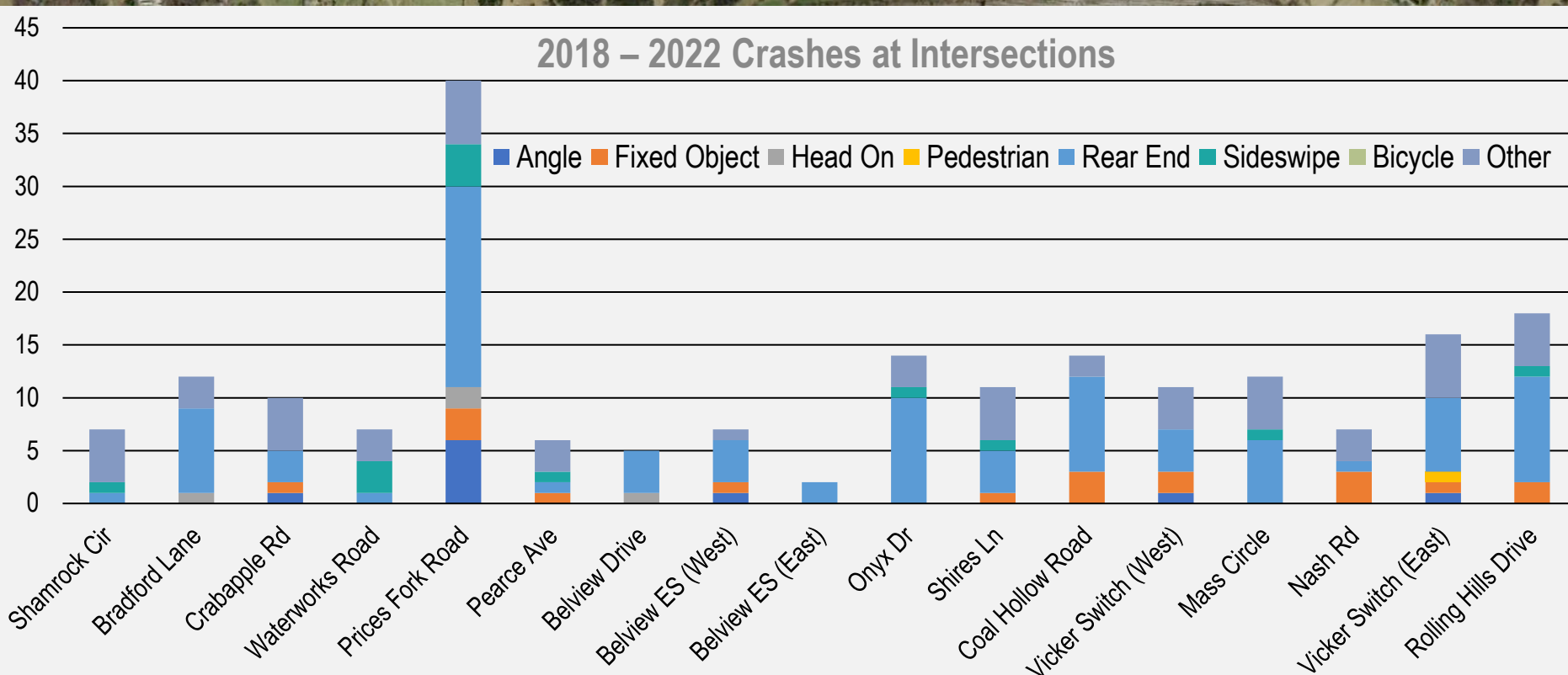
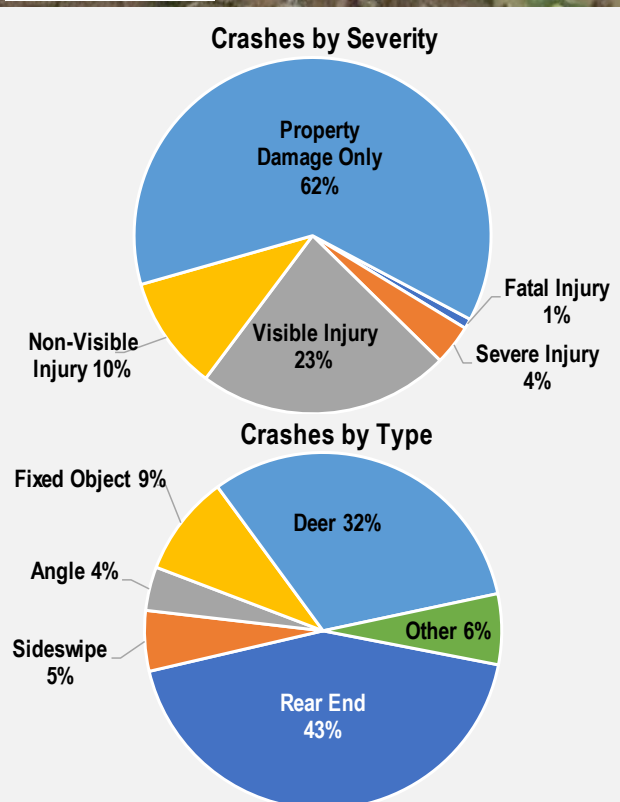
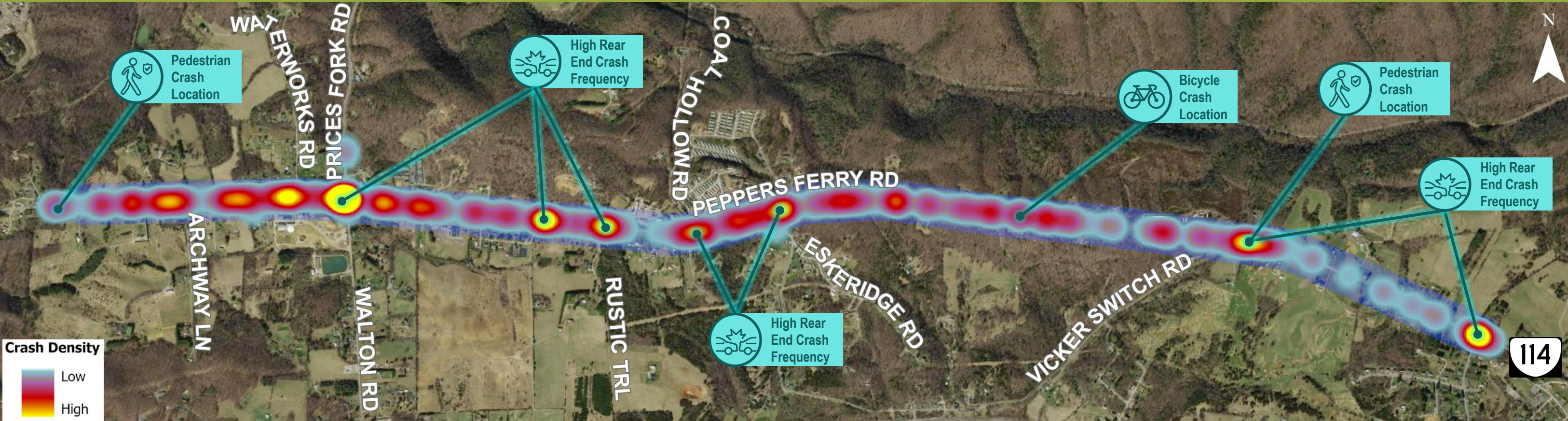
VTrans Needs	
NEED	PRIORITY
Safety Improvement	Very High

Study Summary

VDOT District	Salem
Locality	Montgomery County
Length	3.83 miles
Study Limits	From Shamrock Circle to Rolling Hills Drive
Functional Classification	Minor arterial
Speed Limit	45 MPH

PHASE I - DIAGNOSIS AND PROBLEM IDENTIFICATION

TRAFFIC SAFETY NEEDS



- Safety Issues in the Study Area**
- High number of rear end crashes at Prices Fork Road, Onyx Drive, Coal Hollow Road, and Rolling Hills Drive intersections
 - 3 fatalities and 12 serious injury crashes
 - 38% crashes resulting in injuries
 - 2 pedestrian and 1 bike crash occurred in the corridor